

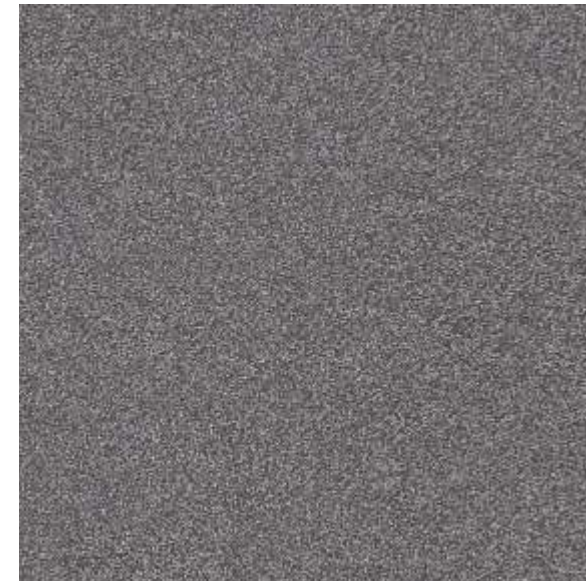
# NITCO

TILES MARBLE MOSAICO



**ROBUSTO**

FULL BODY VITRIFIED



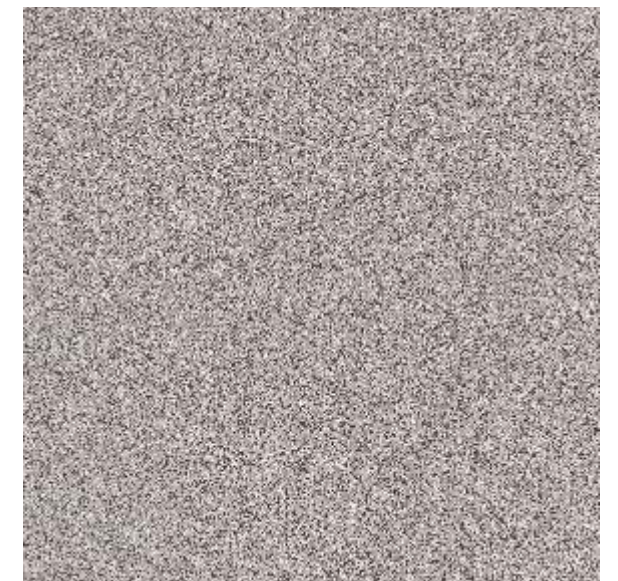
Stanstead Ebony 600x600, 800x800 & 600x1200



Stanstead Mist 600x600, 800x800 & 600x1200



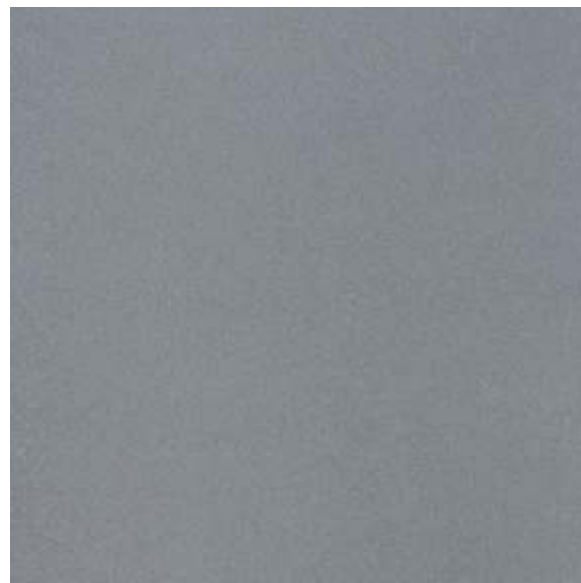
Stanstead Gold 600x600, 800x800 & 600x1200



Stanstead Smoke 600x600 & 600x1200



Stanstead Neo Copper 600x600 & 800x800



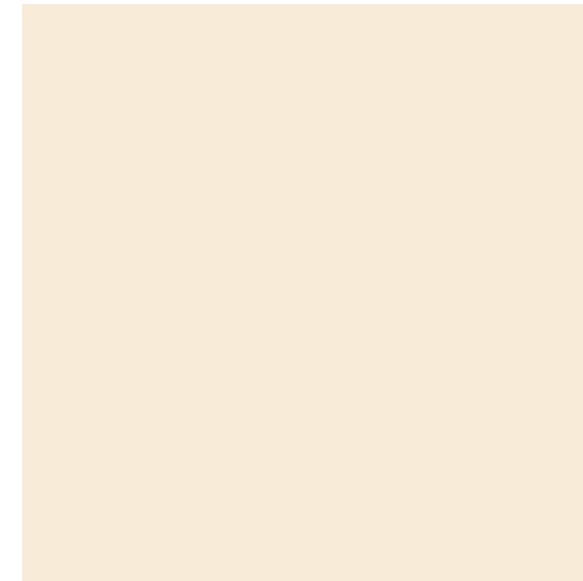
Stanstead Neo Grey 600x600, 800x800 & 600x1200



Gibraltar Ash 600x600, 800x800 & 600x1200



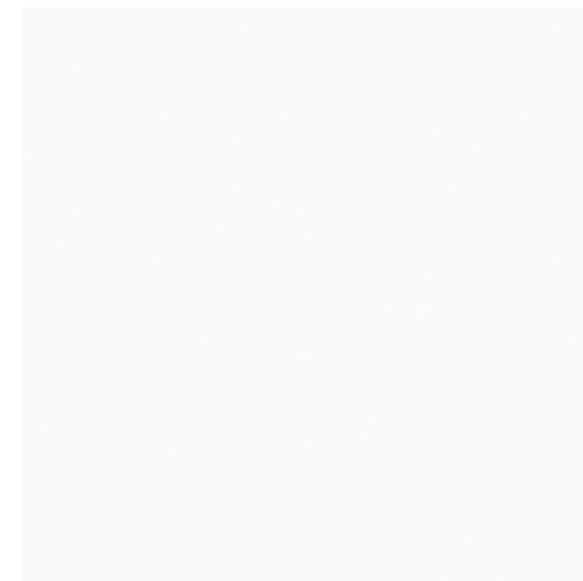
Gibraltar Olive 600x600, 800x800 & 600x1200



Gibraltar Crema 600x600



Gibraltar Jet Black\* 800x800 & 600x1200



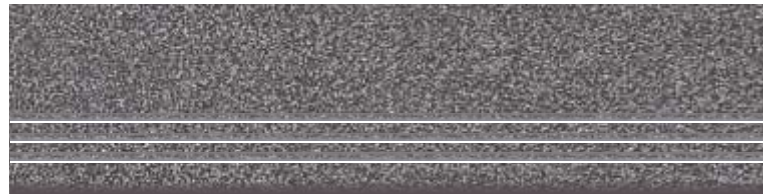
Gibraltar Super White 600x600, 800x800 & 600x1200



Gibraltar XL Grey 600x600 & 600x1200

\* Available only in Matt Finish

**FULL BODY  
STEPS**  
300 X 1200 mm  
Salt & Pepper



Stanstead Ebony



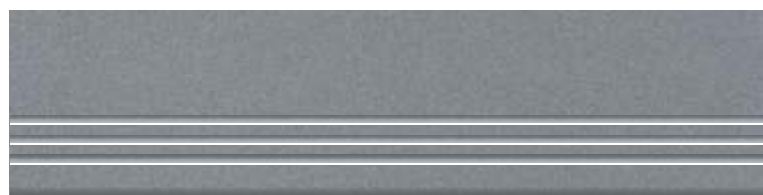
Stanstead Mist



Stanstead Gold



Stanstead Smoke

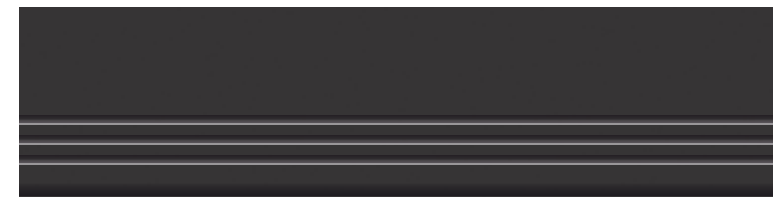


Stanstead Neo Grey

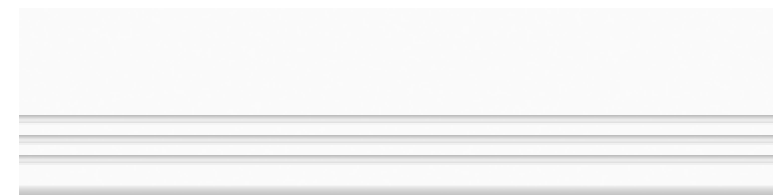
**FULL BODY  
STEPS**  
300 X 1200 mm  
Solid



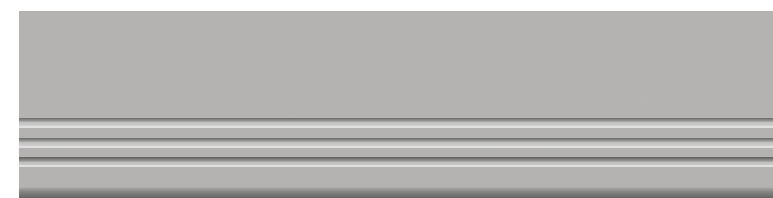
Gibraltar Ash



Gibraltar Jet Black



Gibraltar Super White



Gibraltar XL Grey



Gibraltar Olive

# NITCO

## Technical Specification Full Body Vitrified Tiles

ISO13006 : 2018				
Sr.No.	Test Description	Standard Test Method	Requirement as per Bla	Nitco's Value
1	Deviation in Length & Width	ISO 10545-2	± 0.3% (Max 1.0mm)	± 0.10%
2	Deviation in Thickness	ISO 10545-2	± 5.0% (Max 0.5mm)	± 5.0%
3	Straightness of sides	ISO 10545-2	± 0.3% (Max 0.8mm)	± 0.1%
4	Rectangularity	ISO 10545-2	± 0.3% (Max 1.5mm)	± 0.15%
5	Surface flatness			
	Centre Curvature	ISO 10545-2	± 0.4% (Max 1.8mm)	± 0.2%
	Edge Curvature	ISO 10545-2	± 0.4% (Max 1.8mm)	± 0.2%
	Warpage	ISO 10545-2	± 0.4% (Max 1.8mm)	± 0.2%
6	Surface Quality	ISO 10545-2	Min.95% free from visible defects	> 95% free from visible defects
7	Water Absorption	ISO 10545-3	Avg.= 0.5, Ind. max 0.6	< 0.08%
8	Modulus of Rupture, MOR (N/mm <sup>2</sup> )	ISO 10545-4	= 35	> 35
9	Breaking Strength, N	ISO 10545-4	= 1300	> 1500
10	Resistance to Deep Abrasion Volume of material removed mm <sup>3</sup>	ISO 10545-6	Max 175	< 140
11	Thermal Shock Resistance	ISO 10545-9	No visible defects	Resistant
12	Crazing Resistance	ISO 10545-11	No crazing	Resistant
13	Frost Resistance	ISO 10545-12	No visible damage	Resistant
14	Resistance to Acid, Alkalies and Chemicals (Except HF)	ISO 10545-13	No visible defects	No visible effect
15	Glossiness			Min 85

## Packing Details of Vitrified Tiles

Sr.No.	Dimensions	Tile/Box	Coverage Area	
			Sq. Mts.	Sq. Feet
1	800 mm x 800 mm (32" x 32")	3	1.92	20.67
2	600 mm x 600 mm (24" x 24")	4	1.44	15.50
3	600 mm x 1200 mm (24" x 48")	2	1.44	15.50
4	300 mm x 1200 mm (24" x 48")	2	0.72	7.75

The reproduction of tiles in this catalogue is restricted to four colour printing only and tiles are not relative in sizes. Conforming to ISO requirements, technical specifications of NITCO tiles are applicable only for first grade / first quality tiles. Please inspect all tiles prior to installation. Company will not entertain complaints once tiles are laid / fixed. Price category & PEI grade may change without any notice. Customers are advised to confirm it before placing order.

**NITCO LIMITED**

Nitco House, Sheth Govindram Jolly Marg,  
Kanjur Marg (E), Mumbai - 400042.

Tel.: +91-22-67521555 | Fax: +91-22-67521500.

To Locate the nearest Exclusive Le Studio in your city,  
Please call Toll free:1800 209 9898 | [marketing@nitco.in](mailto:marketing@nitco.in)



[www.nitco.in](http://www.nitco.in)

