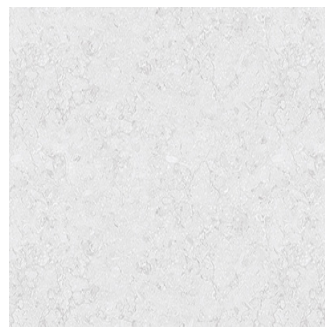


# NITCO



## Grigio Venzo Lt

**Size:** 300 X 450 mm | **Design:** Marble | **Finish:** Glossy Finish in Ceramic Wall Body | **Series:** Cosmos Digital



Front View



Scale View

### Packaging Details

| Size         | No. of tiles in box | Coverage Area |       | Thickness |
|--------------|---------------------|---------------|-------|-----------|
|              |                     | sq/mtr        | sq/ft |           |
| 300 X 450 mm | 6.00                | 0.81          | 8.72  | 9.50      |

### Technical Specification

| Sr.No. | Test Description                          | Test Method             | ISO 13006:1998 E Specification                  | Nitco's Specification                        |
|--------|---|-------------------------|---|--|
| 1      | Deviation in Length (%)                   | ISO 10545 - 2 / EN 98   | $\pm 0.6 \% ( \text{Max} \pm 2.0 \text{ mm} )$  | $\pm 0.15 \%$                                |
| 2      | Deviation in Thickness (%)                | ISO 10545 - 2 / EN 98   | $\pm 10.0 \% ( \text{Max} \pm 0.5 \text{ mm} )$ | $\pm 5.0 \%$                                 |
| 3      | Straightness of Edge (%)                  | ISO 10545 - 2 / EN 98   | $\pm 0.5 \% ( \text{Max} \pm 1.5 \text{ mm} )$  | $\pm 0.3 \%$                                 |
| 4      | Diagonal Variation (%) (Rectangularity)   | ISO 10545 - 2 / EN 98   | $\pm 0.5 \% ( \text{Max} \pm 2.0 \text{ mm} )$  | $\pm 0.15 \%$                                |
| 5      | Surface Flatness (%)                      | ISO 10545 - 2 / EN 98   | + 0.5 , -0.3 ( Max +2.0 mm and -1.5 mm )        | + / - 0.25 %                                 |
| 6      | Surface Quality (%)                       | ISO 10545 - 2 / EN 98   | Min 95% free from any Visible defects           | More than 95 % free from any Visible defects |
| 7      | Water Absorption (%) By Wt.               | ISO 10545 - 3 / EN 99   | 10.0 %  | 10-20 %                                      |
| 8      | Modulus of Rupture In N / mm <sup>2</sup> | ISO 10545 - 4 / EN 100  | 10  | 17   |
| 9      | Thermal Shock Resistance                  | ISO 10545 - 9 / EN 104  | No Visible defects                              | Resistance                                   |
| 10     | Chemical Resistance (Except HF Acid)      | ISO 10545 - 13 / EN 106 | No Visible defects                              | No Visible defects                           |
| 11     | Resistance to Stain                       | ISO 10545 - 14          | Manufacturer to State Class                     | Min. Class 3                                 |
| 12     | MOH Scratch Hardness                      | EN 101                  | Min 4   | 4  |
| 13     | Crazing Resistance                        | ISO 10545 - 14 / EN 105 | No Crazing                                      | Resistance                                   |
| 14     | Abrasion Resistance                       | ISO 10545 - 7 / EN 154  | PEI - II for Glossy to III for Matte            | PEI - II for Glossy to III for Matte         |

WANT TO GET IN TOUCH WITH US?

Toll Free: 1800 266 4826 | Email: [marketing@nitco.in](mailto:marketing@nitco.in)