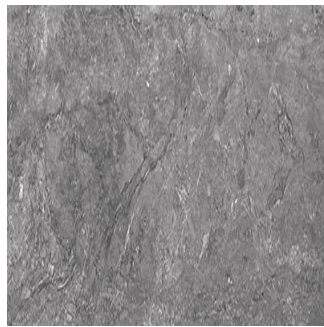


NITCO



Iltas Grey

Size: 600 X 1200 mm | **Design:** Marble | **Finish:** Glossy Finish in Glazed Vitrified Tiles Body | **Series:** Marbillano



Front View



Scale View

Packaging Details

Size	No. of tiles in box	Coverage Area		Thickness
		sq/mtr	sq/ft	
600 X 1200 mm	2.00	1.44	15.50	7.00

Technical Specification

Sr.No.	Test Description	Standard Test Method	ISO 13006:2012 E Specification	Nitco's Value
1	Length and Width	ISO 10545-2 / EN 98	± 0.6 % (max +/-2.0 mm)	± 0.10%
2	Thickness	ISO 10545-2 / EN 98	± 5.0 % (max +/-0.5 mm)	± 4.0%
3	Straightness of sides	ISO 10545-2 / EN 98	± 0.5 % (max +/-1.5mm)	± 0.10%
4	Rectangularity	ISO 10545-2 / EN 98	± 0.5 % (max +/-2.0 mm)	± 0.10%
5	Surface flatness	ISO 10545-2 / EN 98	± 0.5 % (max +2.0 mm)	± 0.15%
6	Surface Quality	ISO 10545-2 / EN 98	95% free from visible defects	> 95% free from visible defects
7	Water Absorption	ISO 10545-3 / EN 99	< 0.5%, Max 0.6%	0.5%
8	Breaking Strength, N	ISO 10545-4 / EN 100	Min 1300 N	Min. 2800 N
9	Modulus of Rupture (MOR), N/mm ²	ISO 10545-4 / EN 100	> 35	Min. 38
10	Abrasion Resistance	ISO 10545-7 / EN 154	PEI III, IV, V	As Specified
11	Thermal Shock Resistance	ISO 10545-9 / EN 104	Resistant to 10 cycle	Resistant
12	Crazing Resistance	ISO 10545-11 / EN 105	No Crazing	Resistant
13	Resistance to Acids, Alkalies and Chemicals (Except HF Acid)	ISO 10545-13 / EN 106	No Visible effect	No Visible effect
14	Resistance to staining	ISO 10545-14	Min 3	Min Class 4
15	Gloss Value (For PGVT)			> 80

WANT TO GET IN TOUCH WITH US?

Toll Free: 1800 266 4826 | Email: marketing@nitco.in