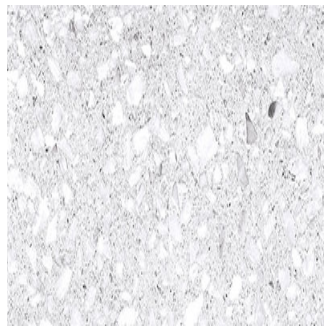


NITCO



Concord Grey

Size: 600 X 1200 mm | **Design:** Marble | **Finish:** Glossy Finish in Glazed Vitrified Tiles Body | **Series:** Marbillano



Front View



Scale View

Packaging Details

| Size | No. of tiles in box | Coverage Area | | Thickness |
|---------------|---------------------|---------------|-------|-----------|
| | | sq/mtr | sq/ft | |
| 600 X 1200 mm | 2.00 | 1.44 | 15.50 | 7.00 |

Technical Specification

| Sr.No. | Test Description | Standard Test Method | ISO 13006:2012 E Specification | Nitco's Value |
|--------|--|-----------------------|--------------------------------|---------------------------------|
| 1 | Length and Width | ISO 10545-2 / EN 98 | ± 0.6 % (max +/-2.0 mm) | ± 0.10% |
| 2 | Thickness | ISO 10545-2 / EN 98 | ± 5.0 % (max +/-0.5 mm) | ± 4.0% |
| 3 | Straightness of sides | ISO 10545-2 / EN 98 | ± 0.5 % (max +/-1.5mm) | ± 0.10% |
| 4 | Rectangularity | ISO 10545-2 / EN 98 | ± 0.5 % (max +/-2.0 mm) | ± 0.10% |
| 5 | Surface flatness | ISO 10545-2 / EN 98 | ± 0.5 % (max +2.0 mm) | ± 0.15% |
| 6 | Surface Quality | ISO 10545-2 / EN 98 | 95% free from visible defects | > 95% free from visible defects |
| 7 | Water Absorption | ISO 10545-3 / EN 99 | < 0.5%, Max 0.6% | 0.5% |
| 8 | Breaking Strength, N | ISO 10545-4 / EN 100 | Min 1300 N | Min. 2800 N |
| 9 | Modulus of Rupture (MOR), N/mm ² | ISO 10545-4 / EN 100 | > 35 | Min. 38 |
| 10 | Abrasion Resistance | ISO 10545-7 / EN 154 | PEI III, IV, V | As Specified |
| 11 | Thermal Shock Resistance | ISO 10545-9 / EN 104 | Resistant to 10 cycle | Resistant |
| 12 | Crazing Resistance | ISO 10545-11 / EN 105 | No Crazing | Resistant |
| 13 | Resistance to Acids, Alkalies and Chemicals (Except HF Acid) | ISO 10545-13 / EN 106 | No Visible effect | No Visible effect |
| 14 | Resistance to staining | ISO 10545-14 | Min 3 | Min Class 4 |
| 15 | Gloss Value (For PGVT) | | | > 80 |

WANT TO GET IN TOUCH WITH US?

Toll Free: 1800 266 4826 | Email: marketing@nitco.in