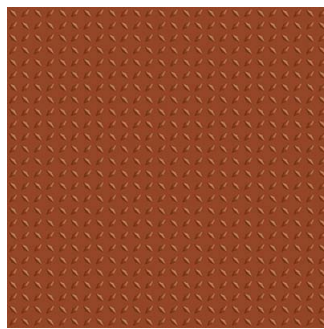


NITCO



Dazzle Terracotta

Size: 300 X 300 mm | **Design:** Modern | **Finish:** Matte Finish in Vitrified Heavy Duty Body | **Series:** Kratos



Front View



Scale View

Packaging Details

Size	No. of tiles in box	Coverage Area		Thickness
		sq/mtr	sq/ft	
300 X 300 mm	10.00	0.90	9.69	9.50

Technical Specification

Sr.No.	Test Description	Standard Test Method	ISO 13006:1998 E Specification	Nitco's Value
1	Deviation in Length and Width	ISO 10545 - 2	$\pm 0.6 \%$ (Max ± 2.0 mm)	$\pm 0.2 \%$
2	Deviation in Thickness	ISO 10545 - 2	$\pm 5.0 \%$ (Max ± 0.5 mm)	$\pm 5 \%$
3	Straightness of Sides	ISO 10545 - 2	$\pm 0.5 \%$ (Max ± 1.5 mm)	$\pm 0.2 \%$
4	Rectangularity	ISO 10545 - 2	$\pm 0.5 \%$ (Max ± 2.0 mm)	$\pm 0.3 \%$
5	Water Absorption	ISO 10545 - 3	$\pm 0.5 \%$ (Max ± 2.0 mm)	$\pm 0.20\%$
6	Mohs Hardness	En- 101	>6	>7
7	Flextural Strength	ISO 10545 - 4	>35 N/mm ³	≥ 35 N/mm ³
8	Deep Abrasion Resistance	ISO 10545 - 6	< 175 Cu.mm	< 175 Cu.mm
9	Breaking Strength	ISO 10545 - 4	>1000 N	>1200 N
10	Chemical Resistance	ISO 10545 - 13	No Damage	No Damage
11	Thermal Shock Resistance	ISO 10545 - 9	No Damage	No Damage
12	Color Resistance	DIN 51094	No Damage	No Damage
13	Stains Resistance	ISO 10545 - 14	Resistant	Resistant
14	Moisture Expansion	ISO 10545 - 10	NIL	NIL

WANT TO GET IN TOUCH WITH US?

Toll Free: 1800 266 4826 | Email: marketing@nitco.in