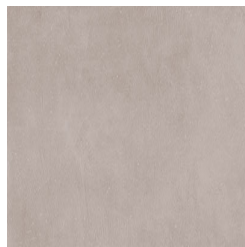


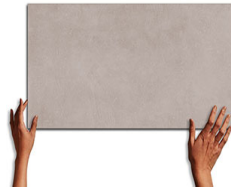


## Earth Chrome

**Size:** 600X1200 mm | **Design:** Stone | **Finish:** Matte Punch Finish in Glazed Vitrified Tiles Body | **Series:** Marbilano Polished



Front View



Scale View

## Packaging Details

| Size        | No. of tiles in box | Coverege Area |       |
|-------------|---------------------|---------------|-------|
|             |                     | sq/mtr        | sq/ft |
| 600X1200 mm | 2.0                 | 1.44          | 15.5  |

## Technical Specification

| Sr.No. | Test Description   | Standard Test Method  | ISO 13006 : 2018 E Specification Bia    | Nitco's Value                      |             |
|--------|--|-----------------------|---|------------------------------------|-------------|
|        |  |                       |   | 1200 mm side                       | 600 mm side |
| 1      | Length and Width   | ISO 10545-2 / EN 98   | ± 0.3 % (max +/-1.0 mm)                 | ± 0.08%                            | ± 0.10%     |
| 2      | Thickness  | ISO 10545-2 / EN 98   | ± 5.0 % (max +/-0.5 mm )                | ± 5%                               |             |
| 3      | Straightness of sides  | ISO 10545-2 / EN 98   | ± 0.3 % (max +/-0.8mm)                  | ± 0.06%                            | ± 0.10%     |
| 4      | Rectangularity   | ISO 10545-2 / EN 98   | ± 0.3 % (max +/-1.5 mm )                | ± 0.10%                            |             |
|        | Surface flatness   | ISO 10545-2 / EN 98   |   |                                    |             |
| 5      | a. Centre curvature  | ISO 10545-2           | ± 0.4 % ( max +1.8 mm )                 | ± 0.13%                            |             |
|        | b. Edge curvature  | ISO 10545-2           |   | ± 0.15%                            |             |
|        | c. Warpage   | ISO 10545-2           |   | ± 0.13%                            |             |
| 6      | Surface Quality  | ISO 10545-2 / EN 98   | 95% free from visible defects           | > 95% free from visible defects    |             |
| 7      | Water Absorption   | ISO 10545-3 / EN 99   | < 0.5%, Max 0.6%                        | < 0.08%                            |             |
| 8      | Breaking Strength, N   | ISO 10545-4 / EN 100  | Min 1300 N                              | Min. 1300 N                        |             |
| 9      | Modulus of Rupture (MOR), N/mm <sup>2</sup>                  | ISO 10545 -4 / EN 100 | > 35                                    | > 35 N                             |             |
| 10     | Abrasion Resistance  | ISO 10545-7 / EN 154  | Report abrasion class and cycles passed | PEI III for Glossy PEI IV for Matt |             |
| 11     | Thermal Shock Resistance                                     | ISO 10545-9 / EN 104  | Resistant to 10 cycle                   | Resistant                          |             |
| 12     | Crazing Resistance   | ISO 10545-11 / EN 105 | No Crazing                              | Resistant                          |             |
| 13     | Resistance to Acids, Alkalies and Chemicals (Except HF Acid) | ISO 10545-13 / EN 106 | No Visible effect                       | No Visible effect                  |             |
| 14     | Resistance to staining                                       | ISO 10545-14          | Min 3                                   | Min Class 4                        |             |
| 15     | Gloss Value (For PGVT)                                       |                       |   | > 80                               |             |