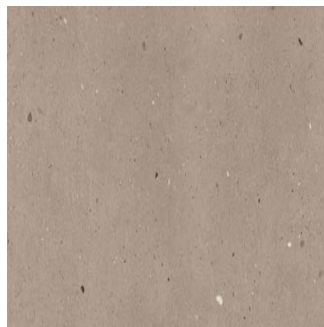




Floyd Beige

Size: 800X1600 mm | Design: Stone | Finish: Matte Finish in Glazed Vitrified Tiles Body | Series: Magnified LT



Front View



Scale View

Packaging Details

Size	No. of tiles in box	Coverege Area	
		sq/mtr	sq/ft
800X1600 mm	2.0	2.56	27.56

Technical Specification

Sr.No.	Test Description	Standard Test Method	ISO 13006 : 2018 E Specification	Nitco's Value	1600 mm side	800 mm side
1	Length and Width	ISO 10545-2 / EN 98	± 0.3 % (max +/-1.0 mm)	± 0.06%		± 0.10%
2	Thickness	ISO 10545-2 / EN 98	± 5.0 % (max +/-0.5 mm)	± 5%		
3	Straightness of sides	ISO 10545-2 / EN 98	± 0.3 % (max +/- 0.8mm)	± 0.05%		± 0.10%
4	Rectangularity	ISO 10545-2 / EN 98	± 0.3 % (max +/-1.5 mm)	± 0.08%		± 0.10%
5	Surface flatness	ISO 10545-2 / EN 98				
	a. Centre curvature	ISO 10545-2	± 0.4 % (max +1.8 mm)	± 0.10%		
	b. Edge curvature	ISO 10545-2		± 0.10%		± 0.15%
	c. Warpage	ISO 10545-2		± 0.10%		
6	Surface Quality	ISO 10545-2 / EN 98	95% free from visible defects	> 95% free from visible defects		
7	Water Absorption	ISO 10545-3 / EN 99	< 0.5%, Max 0.6%	< 0.08%		
8	Breaking Strength, N	ISO 10545-4 / EN 100	Min 1300 N	Min. 1300 N		
9	Modulus of Rupture (MOR), N/mm ²	ISO 10545 -4 / EN 100	> 35	> 35 N		
10	Abrasion Resistance	ISO 10545-7 / EN 154	Report abrasion class and cycles passed	PEI III for Glossy PEI IV for Matt		
11	Thermal Shock Resistance	ISO 10545-9 / EN 104	Resistant to 10 cycle	Resistant		
12	Crazing Resistance	ISO 10545-11 / EN 105	No Crazing	Resistant		
13	Resistance to Acids, Alkalies and Chemicals (Except HF Acid)	ISO 10545-13 / EN 106	No Visible effect	No Visible effect		
14	Resistance to staining	ISO 10545-14	Min 3	Min Class 4		
15	Gloss Value (For PGVT)			> 80		

WANT TO GET IN TOUCH WITH US?

Toll Free: 1800 266 4826 | Email: marketing@nitco.in